

EASY for SAP Enterprise Portal: Knowledge management via the SAP portal.

SAP-certified integration.

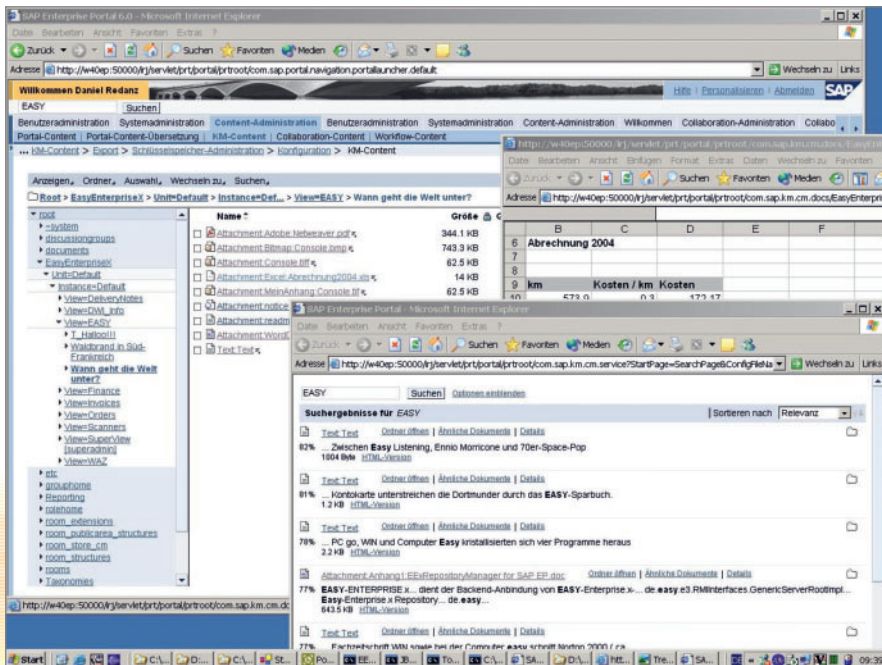
A leading provider of document management solutions in the SAP segment, EASY SOFTWARE also provides certified integration of EASY ENTERPRISE.x to SAP Enterprise Portal 6.0. This allows users using the SAP portal as an integration platform for all data sources available in the company to directly access the data and documents stored in EASY ENTERPRISE.x, and to integrate them profitably with their business processes; all information is uniformly made available under the SAP portal interface.

Simultaneous data access for employees.

Interacting with EASY ENTERPRISE.x, EASY for SAP Enterprise Portal accesses documents stored in the electronic archive in a flexible manner, and additionally allows fast and simultaneous access by employees to all linked data sources.

Single interface – complete data.

The SAP portal allows the user not only to display documents and information stored in EASY ENTERPRISE.x, but also to integrate them with their business processes. This is particularly important when using the SAP portal as a knowledge management tool, because the archive is also used as a “collection pool for data” and corporate knowledge is in many cases stored in documents created from a variety of sources. This method, then, allows transparent access to all data from a single interface.



Accessing archived corporate documents via the SAP Enterprise Portal

Merging all relevant information.

Typical examples of such documents include procedural documentation, press releases, Material Safety Data Sheets, test reports and certificates, as well as project folders and customer files containing the corresponding data such as bank lines or shipping terms. Documents from EASY ENTERPRISE.x can be merged seamlessly with information and documents from other connected applications and sources. Full text searches and genuine groupware or collaboration functions will then be available to these merged data assets, for example. Additionally, extensive customizing options ensure flexible customizing to individual customer requirements.

Separate data migration not required.

From the point of view of the SAP portal, EASY for SAP Enterprise Portal is a “Repository Manager” for the SAP portal’s knowledge management module; integration itself is performed via the portal’s repository framework. This framework allows coupling different data storage from third-party systems, so their contents can be accessed via the portal system’s search and retrieval functions. For this, the SAP search engine “TREX” indexes the information from the EASY repository; this eliminates the need for separate and time-consuming data migration.

Explicit rights assignments.

Portal modules (iViews) allow the user to use EASY ENTERPRISE.x Web client functions in the SAP portal, so graphic and text notes can be edited accordingly. The personalized access permissions are always kept for search/retrieval via the portal. This ensures that users can only access data and documents from EASY ENTERPRISE.x that correspond to their usage rights.

- SAP-certified linkage to the SAP Enterprise Portal 6.0
- Accessing data stored in EASY ENTERPRISE.x from the SAP portal
- All information is made available from the SAP portal interface
- Fast and simultaneous access to all data
- Seamlessly merging documents from EASY ENTERPRISE and other connected applications and sources
- Security according to the EASY ENTERPRISE user role